

External Speaker with Dual Speakers and Audio Filter

SP-9000

Technical Supplement

©2010 VERTEX STANDARD CO., LTD. Printed in Japan.

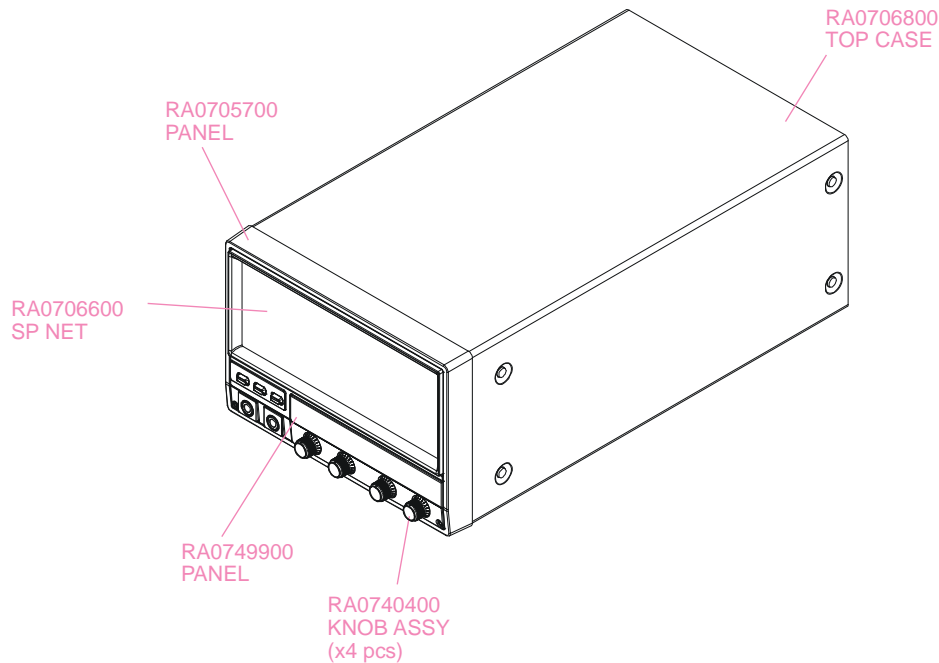
VERTEX STANDARD CO., LTD.
4-8-8 Nakameguro, Meguro-Ku, Tokyo 153-8644, Japan

VERTEX STANDARD
US Headquarters
10900 Walker Street, Cypress, CA 90630, U.S.A.

YAESU UK LTD.
Unit 12, Sun Valley Business Park, Winnall Close
Winchester, Hampshire, SO23 0LB, U.K.

VERTEX STANDARD HK LTD.
Unit 5, 20/F., Seaview Centre, 139-141 Hoi Bun Road,
Kwun Tong, Kowloon, Hong Kong

VERTEX STANDARD (AUSTRALIA) PTY., LTD.
Normanby Business Park, Unit 14/45 Normanby Road
Notting Hill 3168, Victoria, Australia



Supplied Parts

- Speaker Cables - RCA to 3.5 mm Mono - (p/n: T9101275B) 2 pcs.
- RCA Plug (p/n: P0091365) 1 pc.

Specifications

Speakers:

- Speaker Aperture: 4: (100 mm); Left and right speakers are identical.
- Maximum Input: 7 Watts
- Input Audio Impedance: 8-ohm
- Audio Frequency Response: 100 ~ 12,000 Hz

Filter Characteristics (Cutoff Frequencies):

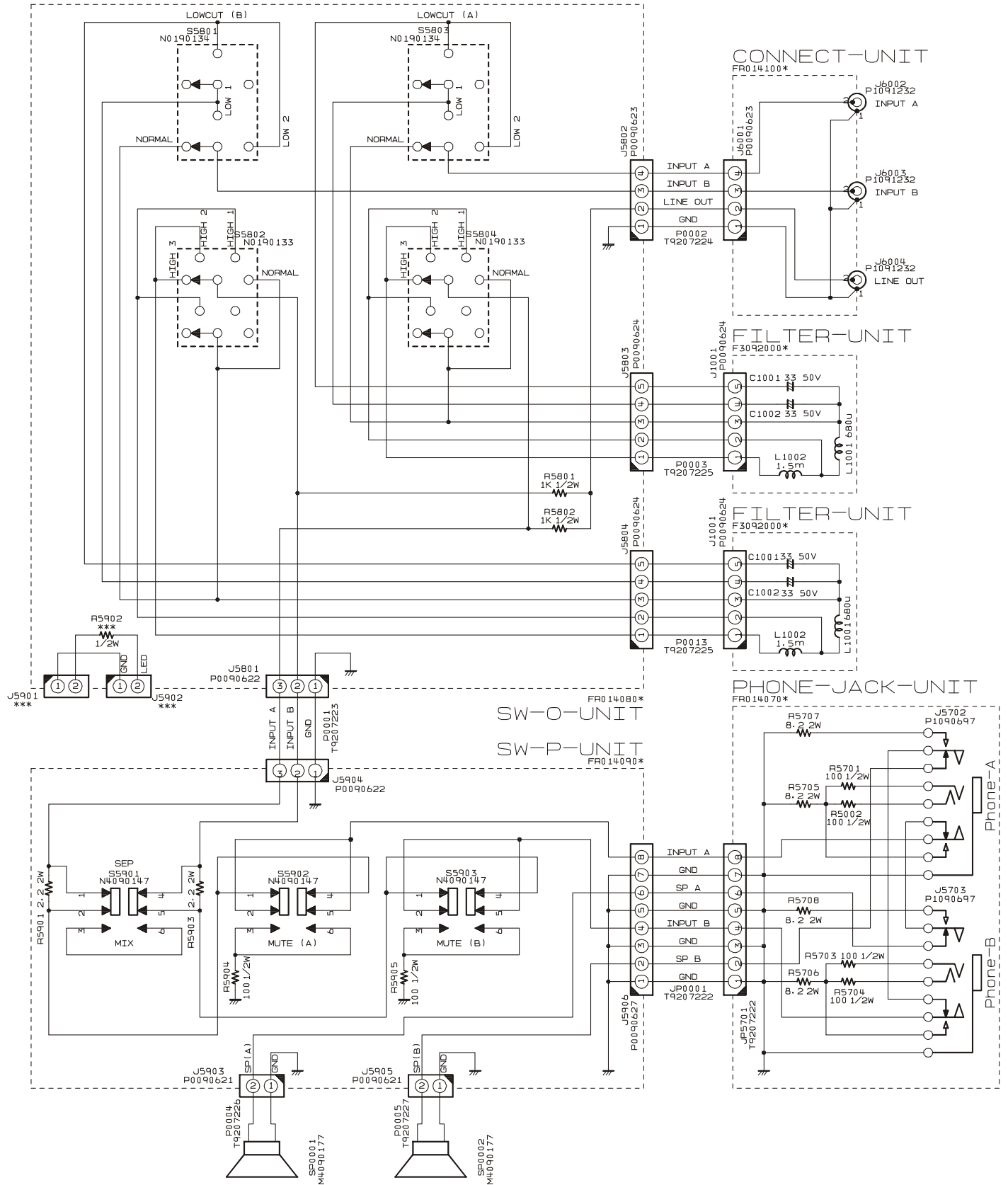
- Independent Left and Right Filters are built in.
- LOW1 Approx. 300Hz (-6dB/Oct)
- LOW2 Approx. 500Hz (-6dB/Oct)
- HIGH1 Approx. 2.4kHz (-6dB/Oct)
- HIGH2 Approx. 1kHz (-6dB/Oct)
- HIGH3 Approx. 700Hz (-6dB/Oct)

Misc.:

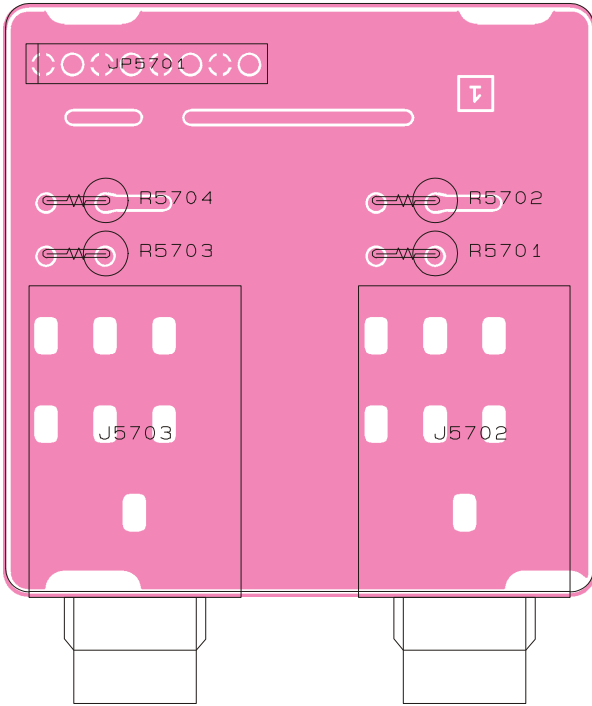
- Case Size: 9.7" x 7.2" x 17.2" (246 x 182 x 438 mm) WHD (without knobs/jacks)
- Weight: 8.8 lb (4 kg)

Circuit Diagram

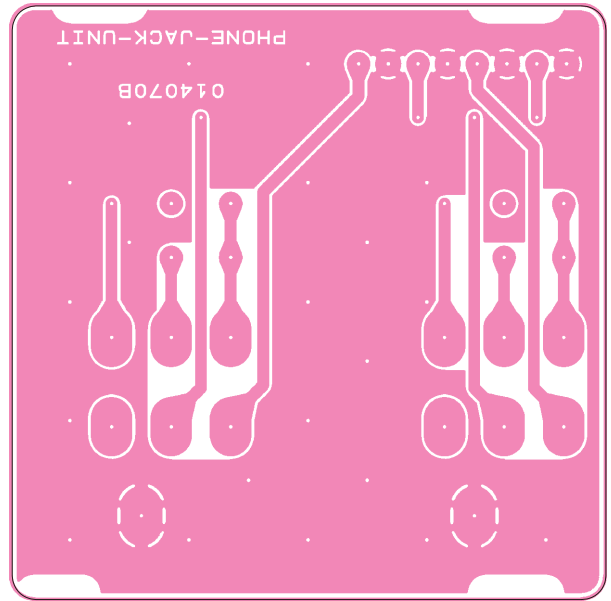
SP-9000
CONNECTION-DIAGRAM



PHONE-JACK-UNIT Parts Layout (Lot. 1 ~ 19)

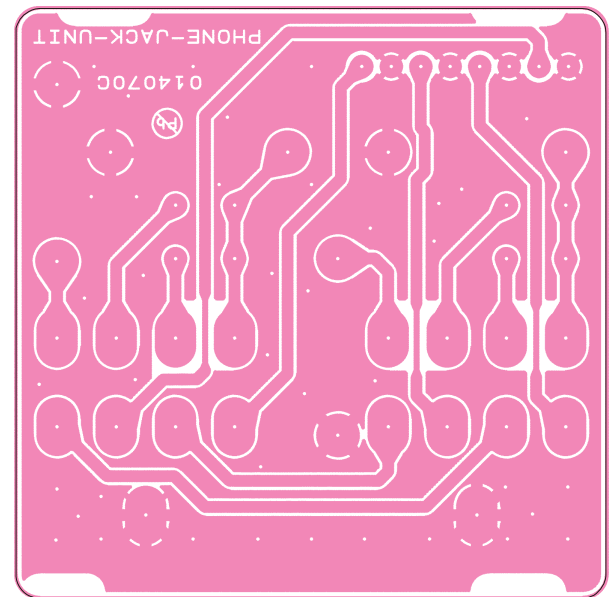
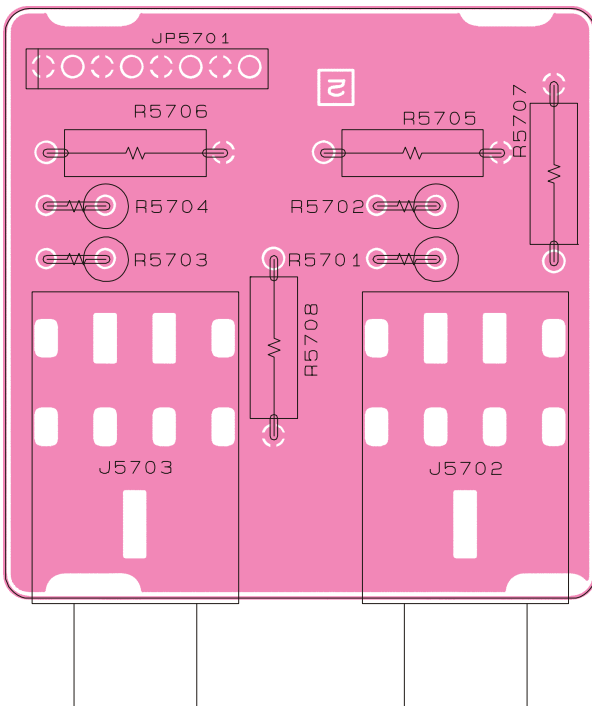


Component side

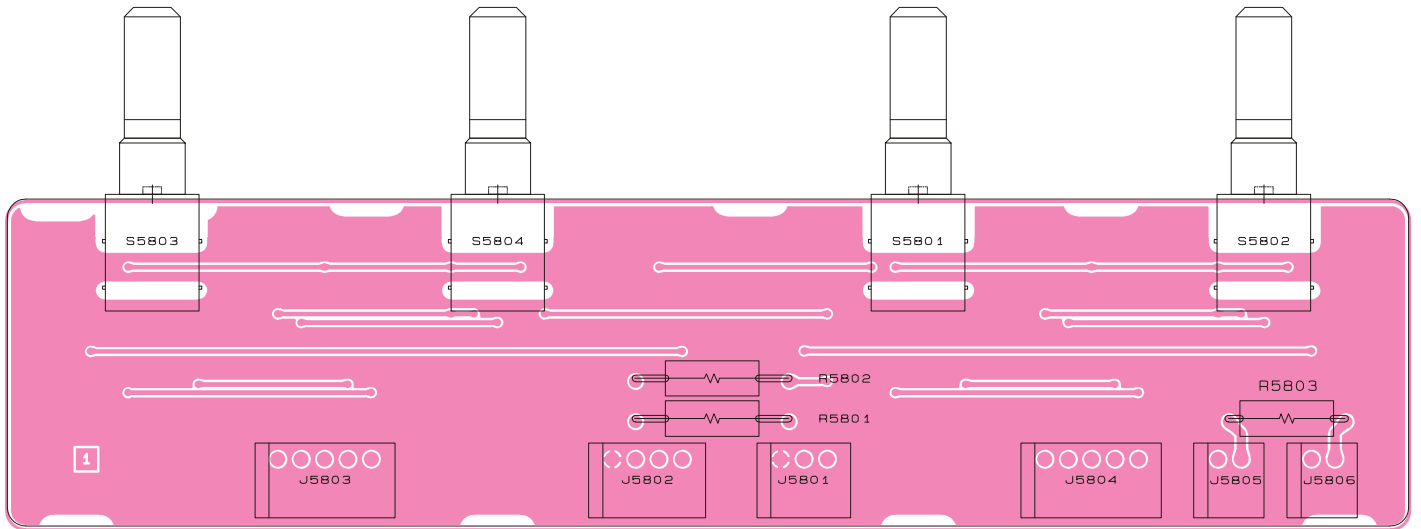


Solder side

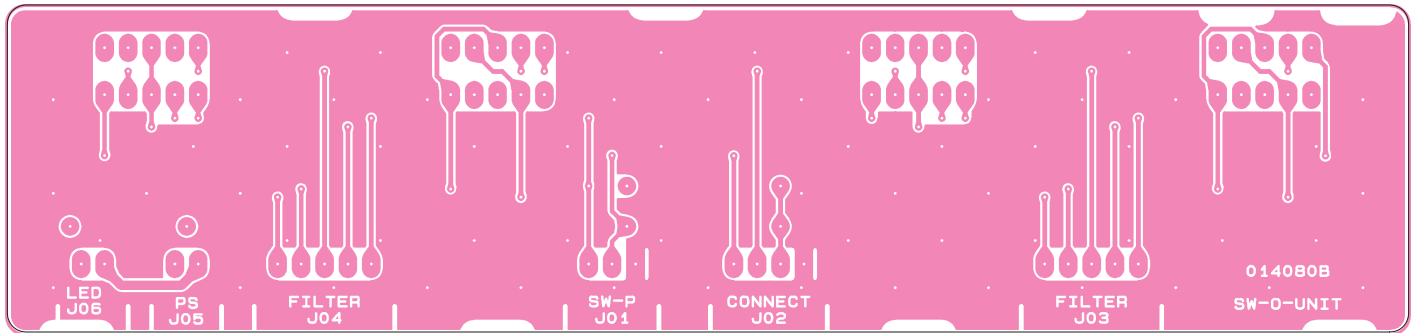
PHONE-JACK-UNIT Parts Layout (Lot. 20 ~)



SW-O-UNIT Parts Layout (Lot. 1 ~ 19)

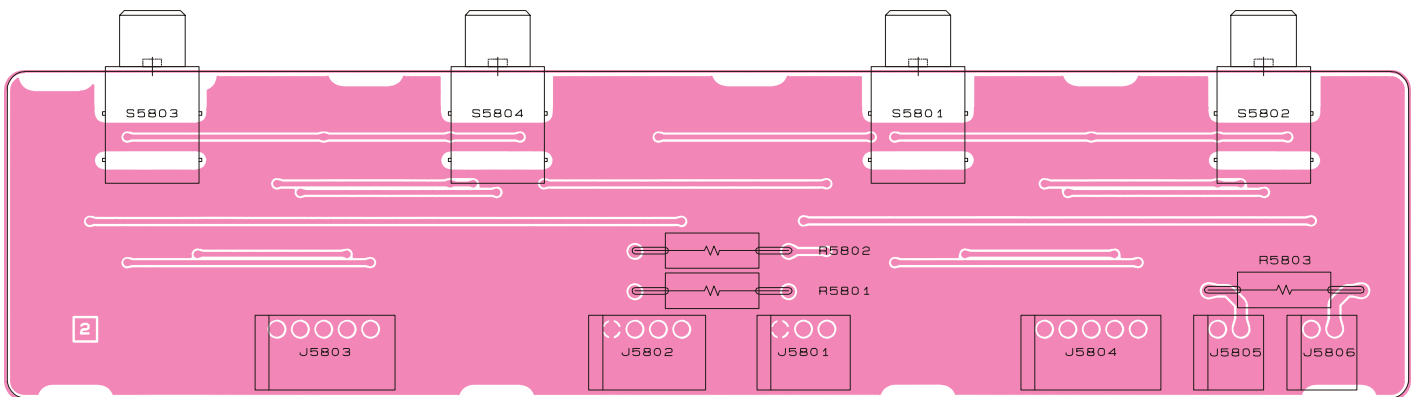


Component side

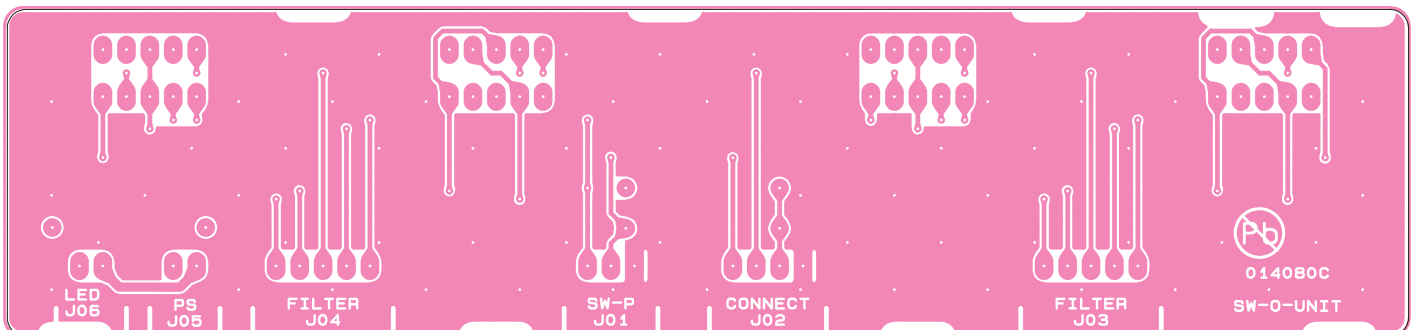


Solder side

SW-O-UNIT Parts Layout (Lot. 20 ~)

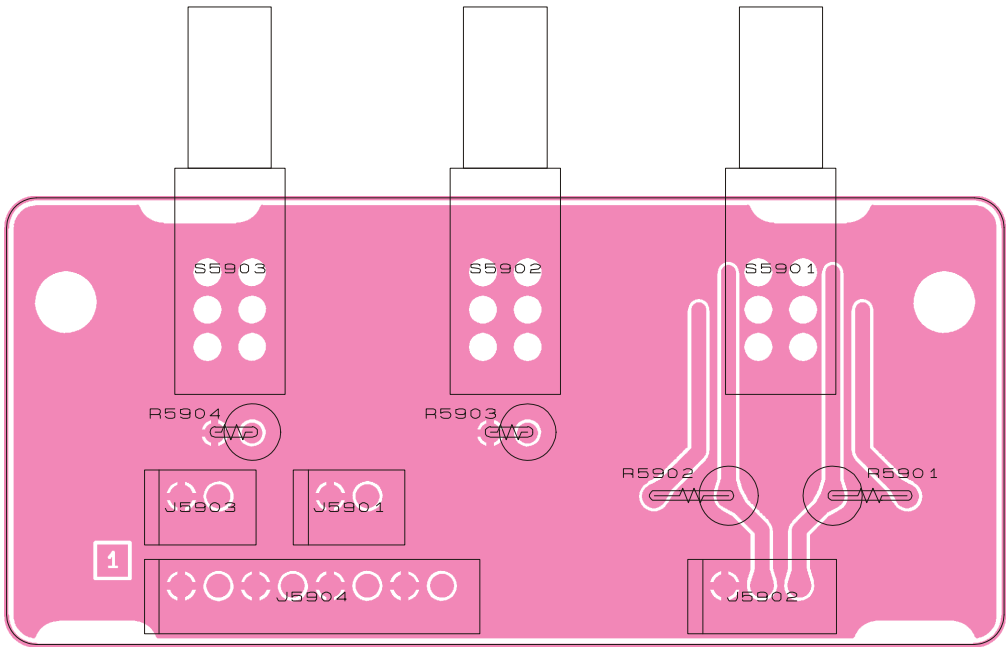


Component side

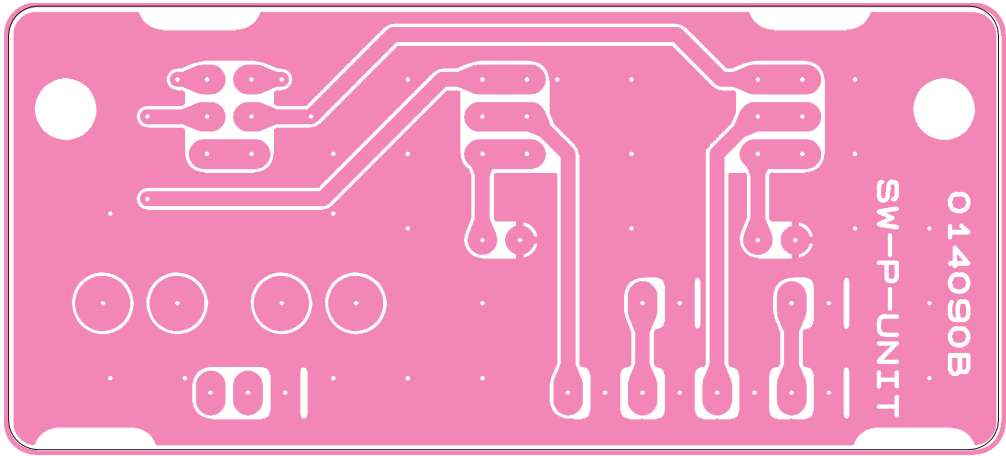


Solder side

SW-P-UNIT Parts Layout (Lot. 1 ~ 19)

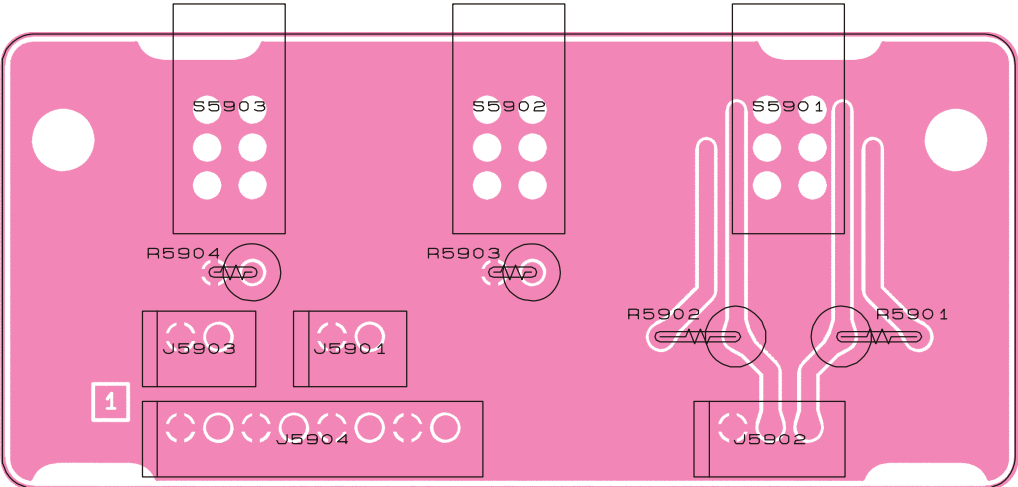


Component side

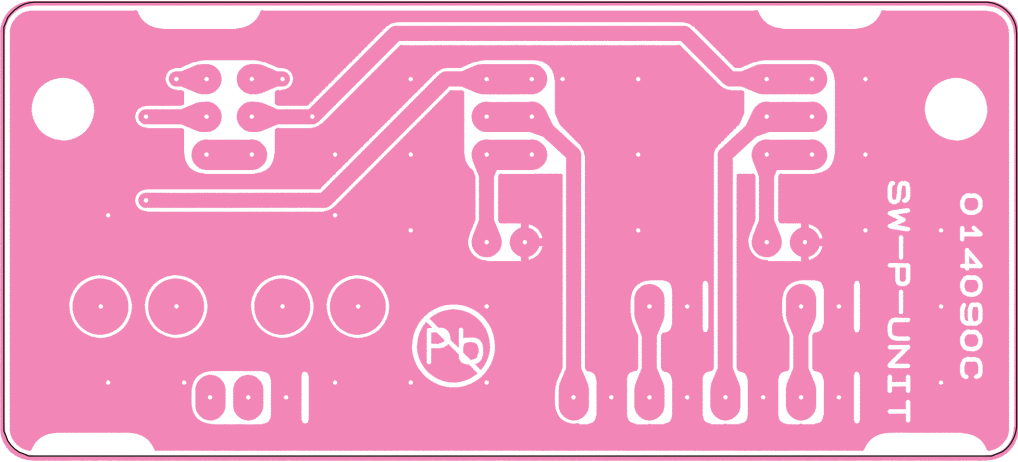


Solder side

SW-P-UNIT Parts Layout (Lot. 20 ~)

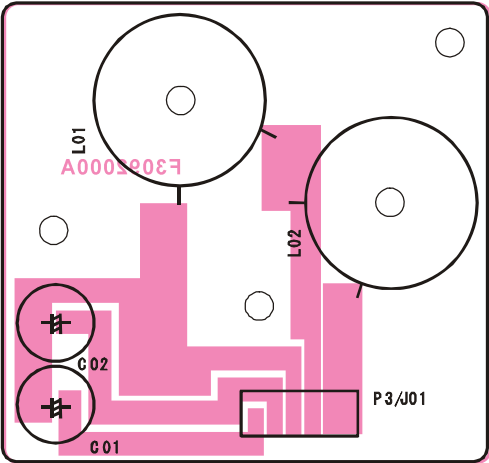


Component side

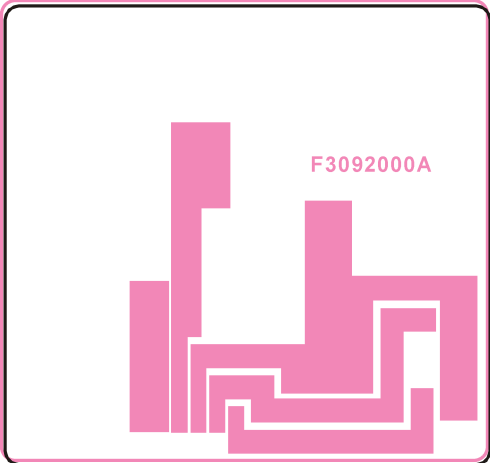


Solder side

FILTER-UNIT Parts Layout (Lot. 1~ 9)

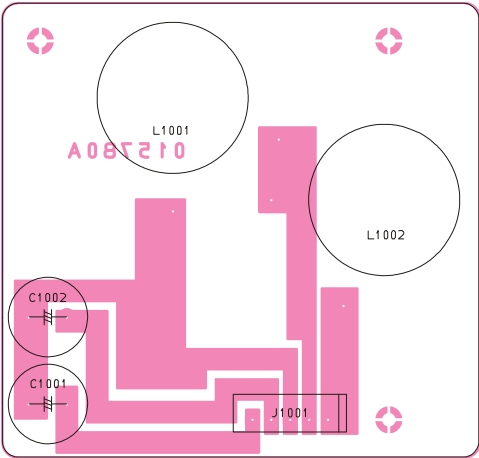


Component side

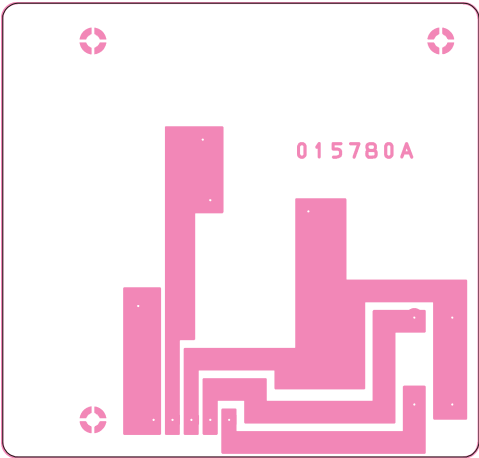


Solder side

FILTER-UNIT Parts Layout (Lot. 10 ~)

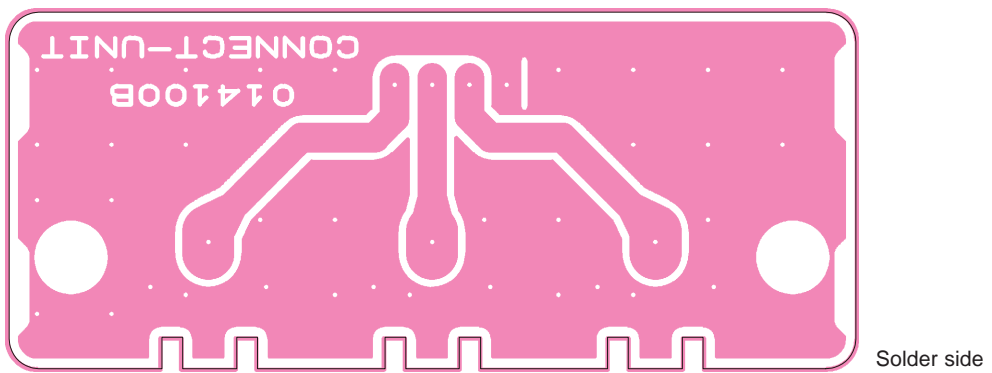
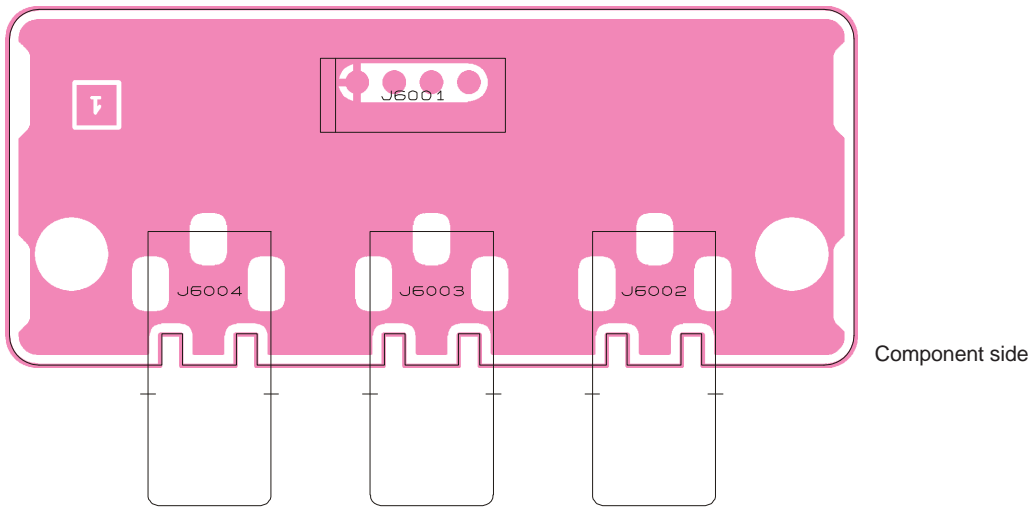


Component side

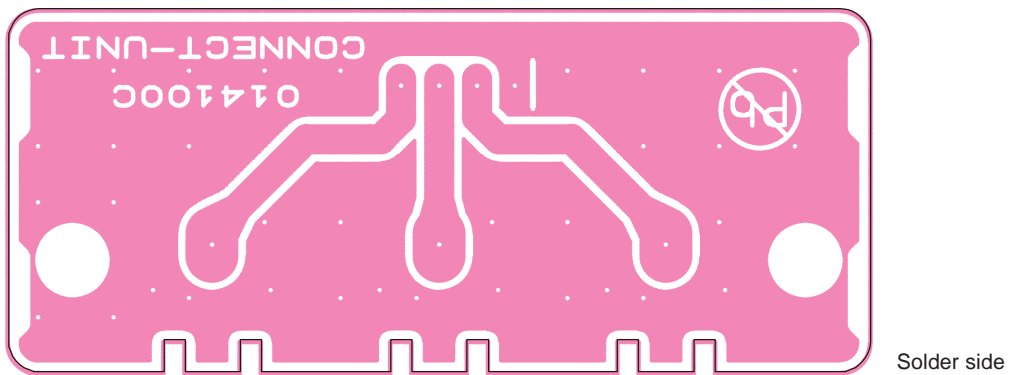
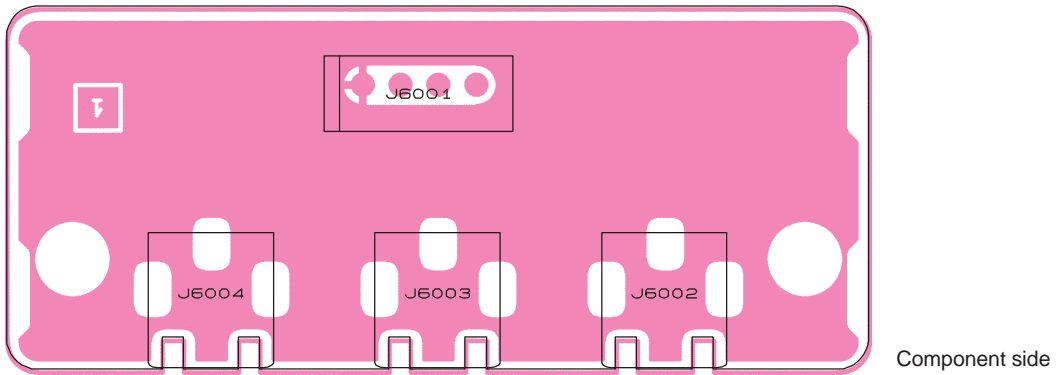


Solder side

CONNECT-UNIT Parts Layout (Lot. 1 ~19)

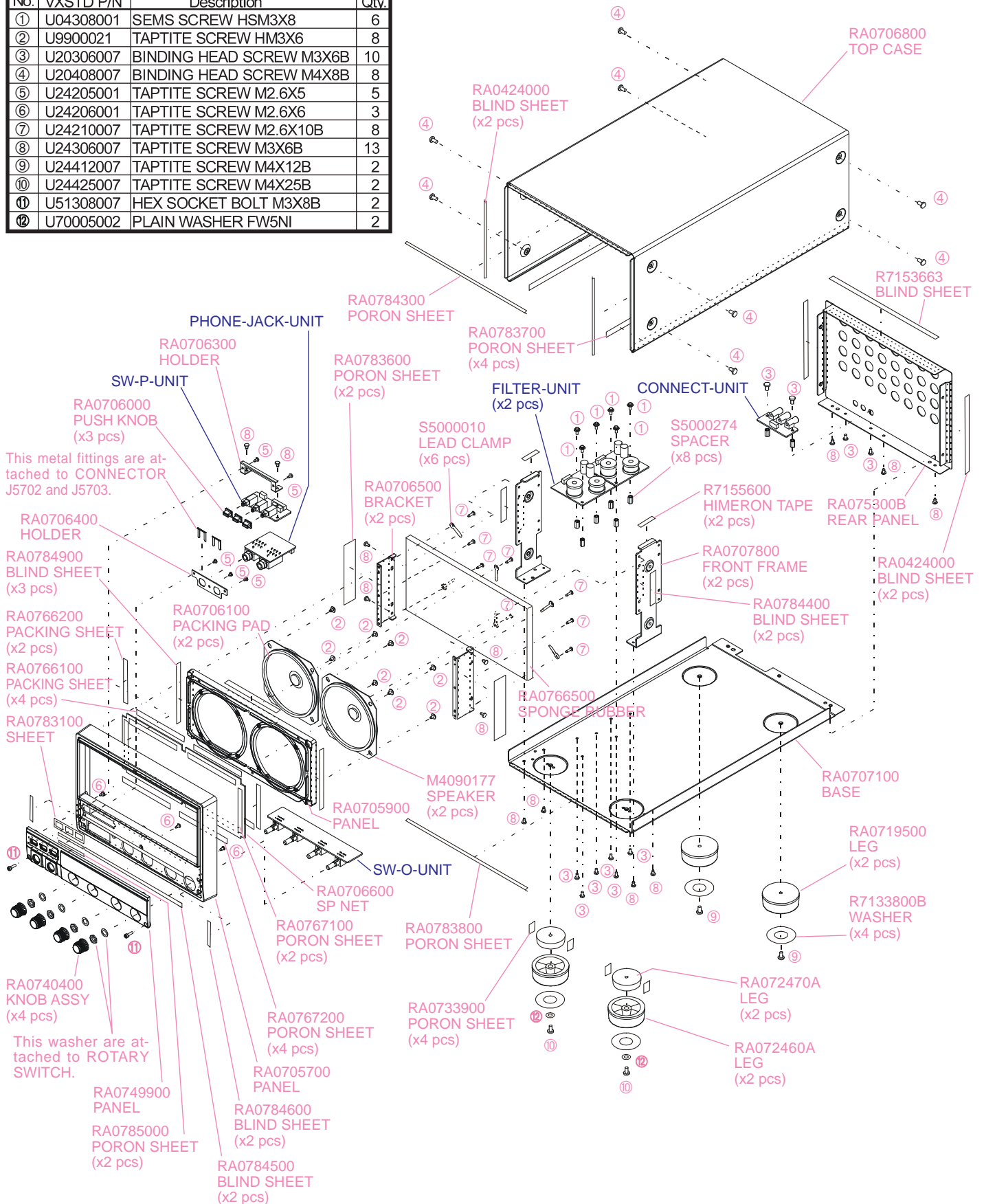


CONNECT-UNIT Parts Layout (Lot. 20 ~)



Exploded Views & Mechanical Parts

Screw List			
No.	VXSTD P/N	Description	Qty.
①	U04308001	SEMS SCREW HSM3X8	6
②	U9900021	TAPTITE SCREW HM3X6	8
③	U20306007	BINDING HEAD SCREW M3X6B	10
④	U20408007	BINDING HEAD SCREW M4X8B	8
⑤	U24205001	TAPTITE SCREW M2.6X5	5
⑥	U24206001	TAPTITE SCREW M2.6X6	3
⑦	U24210007	TAPTITE SCREW M2.6X10B	8
⑧	U24306007	TAPTITE SCREW M3X6B	13
⑨	U24412007	TAPTITE SCREW M4X12B	2
⑩	U24425007	TAPTITE SCREW M4X25B	2
⑪	U51308007	HEX SOCKET BOLT M3X8B	2
⑫	U70005002	PLAIN WASHER FW5NI	2



Parts List

REF	DESCRIPTION	VALUE	V/W	TOL.	MFR'S DESIG	VXSTD P/N	VERS.	LOT	SIDE	LAY ADR
*** PHONE-JACK-UNIT ***										
	PCB with Components					CB3363001				
	Printed Circuit Board					FR014070B FR014070C		1- 20-		
J 5702	CONNECTOR				HLJ2305-0130609	P1090823		1-		
J 5702	CONNECTOR				S-G4617#02	P1090697		20-		
J 5702	CONNECTOR				YKB21-5077(G)	P1091404		25-		
J 5703	CONNECTOR				HLJ2305-0130609	P1090823		1-		
J 5703	CONNECTOR				S-G4617#02	P1090697		20-		
J 5703	CONNECTOR				YKB21-5077(G)	P1091404		25-		
JP5701	WIRE ASSY				AH010H #242504	T9207222		1-		
R 5701	CARBON FILM RES.	100	1/2W	5%	RD12TJ101 100	J01275101		1-		
R 5702	CARBON FILM RES.	100	1/2W	5%	RD12TJ101 100	J01275101		1-		
R 5703	CARBON FILM RES.	100	1/2W	5%	RD12TJ101 100	J01275101		1-		
R 5704	CARBON FILM RES.	100	1/2W	5%	RD12TJ101 100	J01275101		1-		
R 5705	METAL FILM RES.	8.2	2W	5%	ERX-2SJ8R2 8.2	J22339009		1-		
R 5706	METAL FILM RES.	8.2	2W	5%	ERX-2SJ8R2 8.2	J22339009		1-		
R 5707	METAL FILM RES.	8.2	2W	5%	ERX-2SJ8R2 8.2	J22339009		20-		
R 5708	METAL FILM RES.	8.2	2W	5%	ERX-2SJ8R2 8.2	J22339009		20-		
*** SW-O-UNIT ***										
	PCB with Components					CB3364001				
	Printed Circuit Board					FR014080B FR014080C		1- 20-		
J 5801	CONNECTOR				SC25-03WL	P0090637		1-		
J 5802	CONNECTOR				SC25-04WL	P0090713		1-		
J 5803	CONNECTOR				SC25-05WL	P0090638		1-		
J 5804	CONNECTOR				SC25-05WL	P0090638		1-		
J 5805	CONNECTOR				SC25-02WL	P0090712		1		
J 5806	CONNECTOR				SC25-02WL	P0090712		1		
R 5801	CARBON FILM RES.	1k	1/2W	5%	RD12TJ102 1K	J01275102		1-		
R 5802	CARBON FILM RES.	1k	1/2W	5%	RD12TJ102 1K	J01275102		1-		
S 5801	ROTARY SWITCH				SRBM131400	N0190134		1-		
S 5802	ROTARY SWITCH				SRBM140800	N0190133		1-		
S 5803	ROTARY SWITCH				SRBM131400	N0190134		1-		
S 5804	ROTARY SWITCH				SRBM140800	N0190133		1-		
*** SW-P-UNIT ***										
	PCB with Components					CB3365001				
	Printed Circuit Board					FR014090B FR014090C		1- 20-		
J 5901	CONNECTOR				SC25-02WS	P0090621		1-		
J 5902	CONNECTOR				SC25-03WS	P0090622		1-		
J 5903	CONNECTOR				SC25-02WS	P0090621		1-		
J 5904	CONNECTOR				SC25-08WS	P0090627		1-		
R 5901	METAL FILM RES.	2.2	2W	5%	ERX-2SJ2R2 2.2	J22339038		1-		
R 5902	METAL FILM RES.	2.2	2W	5%	ERX-2SJ2R2 2.2	J22339038		1-		
R 5903	CARBON FILM RES.	100	1/2W	5%	RD12TJ101 100	J01275101		1-		
R 5904	CARBON FILM RES.	100	1/2W	5%	RD12TJ101 100	J01275101		1-		
S 5901	PUSH SWITCH				SPUP190700	N4090157		1-		
S 5902	PUSH SWITCH				SPUP190700	N4090157		1-		
S 5903	PUSH SWITCH				SPUP190700	N4090157		1-		
*** FILTER-UNIT ***										
	PCB with Components					CB3366001				
	Printed Circuit Board					F3092000A FR015780A		1- 10-		
C 1001	AL.ELECTRO.CAP.	33uF	50V		RBP-50V330MH4#	K40179020		1-		
C 1002	AL.ELECTRO.CAP.	33uF	50V		RBP-50V330MH4#	K40179020		1-		
J 1001	CONNECTOR				SC25-05WS	P0090624		1-		
L 1001	AFC	680uH			LC-307A 680UH	L2030085A		1-		
L 1002	AFC	1.5mH			LC-308A 1.5MH	L2030086A		1-		
*** CONNECT-UNIT ***										
	PCB with Components					CB3367001				
	Printed Circuit Board					FR014100B FR014100C		1- 20-		
J 6001	CONNECTOR				SC25-04WS	P0090623		1-		
J 6002	CONNECTOR				JPJ2548-01-010	P1091232		1-		
J 6003	CONNECTOR				JPJ2548-01-010	P1091232		1-		
J 6004	CONNECTOR				JPJ2548-01-010	P1091232		1-		
*** MAIN-ASSY ***										
P 0001	WIRE ASSY				SW-O-UNIT to SW-P-UNIT	T9207223		1-		
P 0002	WIRE ASSY				SW-O-UNIT to CONNECT-UNIT	T9207224		1-		
P 0003	WIRE ASSY				SW-O-UNIT to FILTER-UNIT	T9207225		1-		
P 0004	WIRE ASSY				SW-P- to SP1	T9207226		1-		
P 0005	WIRE ASSY				SW-P- to SP2	T9207227		1-		
P 0006	WIRE ASSY				SW-O-UNIT to FILTER-UNIT	T9207225		1-		